



EDAC Multi-Connectors

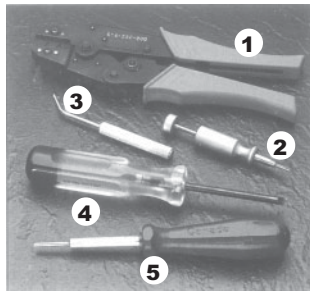
EDAC multi-connectors use self cleaning Y pins that are inserted at 90° for mating. Ideal for studio and semi-permanent installations. Features gold contacts and a wide range of sizes.



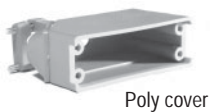
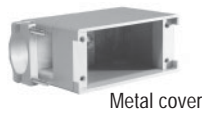
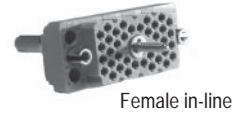
EDAC Pins and Tools

Pins
 Order #
 C516 0500 Solder 100 bag
 C516 0590 Crimp 100 bag

Tools (Special Order)
 Order #
 (1) C516 2802 Crimping tool
 (2) C516 2803 Ejection tool
 (3) C516 2804 Insertion tool
 (4) C516 2805 Polarizing tool
 (5) C516 2807 for wire wrap

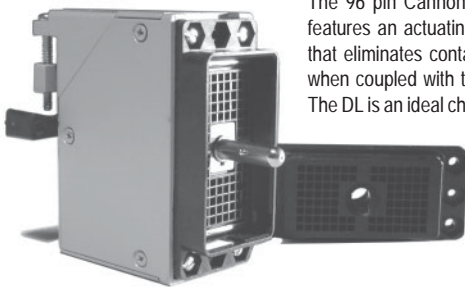


EDAC Tools available.



	20 Pin	38 Pin	56 Pin	90 Pin	120 Pin
Order #	Order #	Order #	Order #	Order #	Order #
Male in-line	C516 0200	C516 0380	C516 0560	C516 0900	C516 1200
Female in-line	C516 0204	C516 0384	C516 0564	C516 0904	C516 1204
Female panel	C516 0203	C516 0383	C516 0563	C516 0903	C516 1203
Male panel	C516 0205	C516 0385	C516 0565	C516 0905	C516 1205
Metal cover	C516 0201	C516 0381	C516 0561	C516 0901	C516 1201
Poly cover	C516 0202	C516 0382	C516 0562	C516 0902	C516 1202

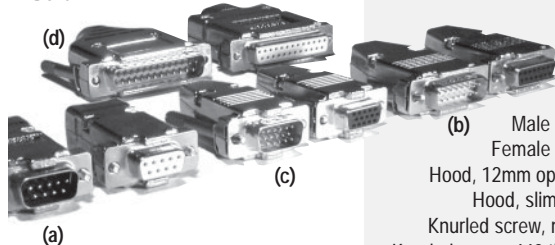
Cannon DL



The 96 pin Cannon DL connector features an actuating lever system that eliminates contact brush wear when coupled with the metal shell. The DL is an ideal choice for permanent studio installations.

Order #	Description
C400 9600	In-Line connector with actuator
C400 9601	Plastic cover for in-line connector
C400 9602	Female receptacle
C400 9603	Bag of 100 pins
C400 9604	Actuating handle
C400 9605	Crimp Tool
C400 9606	Extraction Tool
C400 9607	Metal Shell custom milled EDAC

D-Sub



	9 Pin (a)	15 Pin (b)	15 Pin HD (c)	25 Pin (d)
Order #	Order #	Order #	Order #	Order #
(b) Male insert	C400 5009-00	C400 5015-00	C400 5015-04	C400 5025-00
Female insert	C400 5009-01	C400 5015-01	C400 5015-05	C400 5025-01
Hood, 12mm opening	C400 5009-02	C400 5015-02	C400 5009-02	C400 5025-02
Hood, slim shell	C400 5009-03	C400 5015-03	C400 5009-03	C400 5025-03
Knurled screw, metric				C400 5025-04
Knurled screw, 440 thread				C400 5025-05



Multi-Pin Connectors

Direct Box/Interface

Audio Cables

Connectors & Adaptors

Video

Bulk Cable

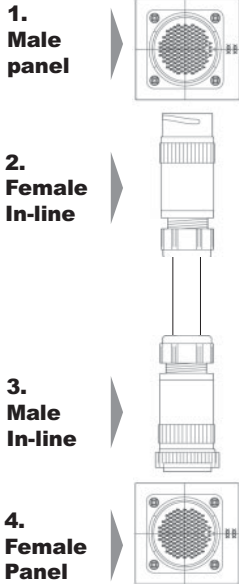
Cable Management

Custom Shop

Radial VLK

Radial VLK

Radial VLK connectors follow the 5015 circular bayonet Mil-spec standard. Features heavy duty replaceable pins, large backshell and choice of standard compression or Kellem's grip.



Radial VLK connector Item/Description

1. Male Panel
2. In-line female with lock
3. In-line male
4. Female panel with lock

37 Pin
Order #

- C490 0371
- C490 0372
- C490 0373
- C490 0374

54 Pin
Order #

- C490 0541
- C490 0542
- C490 0543
- C490 0544

85 Pin
Order #

- C490 0851
- C490 0852
- C490 0853
- C490 0854

150 Pin
Order #

Item/Description

1. Male panel with lock
2. In-line female
3. In-line male with lock
4. Female panel

- C491 1501
- C491 1502
- C491 1503
- C491 1504

Custom configurations are available upon request.

All connectors come equipped with pins, strain relief, extender shell and protective cover. Optional metal strain reliefs are offered below.



Plastic Compression Strain Reliefs



Plastic compression strain relief

Order #	Size	Cut-out	Range
C440 0062-00	.39"-.56"	.89"	6-9 Pair
C440 0160-01	.51"-.71"	1.05"	12-16 Pair
C440 0200-01	.70"-.98"	1.35"	20-36 Pair
C440 0420-01	.86"-1.26"	1.92"	42-58 Pair
C440 0420-03	.86"-1.26"	1.92"	42-58 Pair

Metal Compression Strain Reliefs



Metal strain relief

Order #	Size	Cut-out	Range
C440 0160	.562"-.688"	.81"	9-16 Pair
C440 0200	.750"-875"	1.00"	20-28 Pair
C440 0280	.812"-.938"	1.00"	28-36 Pair
C440 0290*	.875"-1.00"	1.375"	42-58 Pair
C440 0291	1.25"-1.375"	1.92"	42-58 Pair

* For MASS connector.

Multi-Pin Connectors



AMP CPC

AMP CPC 37 Pin

The AMP CPC circular plastic connector is a cost effective yet robust multi-pin that is ideal for live stage, broadcast, studio sub-snakes and drive racks.



Order #	Description
C400 6103-04	Male pins (bag of 100)
C400 6105-04	Female pins (bag of 100)
C400 5183-00	Extraction tool
C400 5190-00	Replacement actuating ring



In-Line Female
Has locking screw-on ring

Order # C400 6150-01



Panel Male
Front mount flange

Order # C400 6151-01



In-line Male
Used with backshell

Order # C400 6151-02



Panel Flange
Converts in-line F to panel

Order # C400 7299-04



Back Shell
Fits male and female in-line

Order # C400 6138-01



Extender Shell
Fits back shell for breakout

Order # C400 7055-01

Ordering the CPC is easy; select the in-line connector, add the back-shell, extender barrel and pins. For panel mounts, order the male as is, while you must use the female in-line and add the flange.

MASS Connectors

The Mass connector features a hermaphroditic design whereby male and female pins are housed together in a split format. This allows a 'Mass to Mass' cable to be extended from either end. Comes complete with strain relief and protective cover.

Order #	Description
C400 0122-00	Mass 122 pin, in-line - W3
C400 0122-01	Mass 122 pin, panel - W3
C400 0176-00	Mass 176 pin, in-line - W4
C400 0176-01	Mass 176 pin, panel - W4
C400 0176-02	Mass 176 pin, in-line with extra large opening & HD Kellem's grip



Direct Box/Interface

Audio Cables

Connectors & Adaptors

Video

Bulk Cable

Cable/Management

Custom Shop

MASS